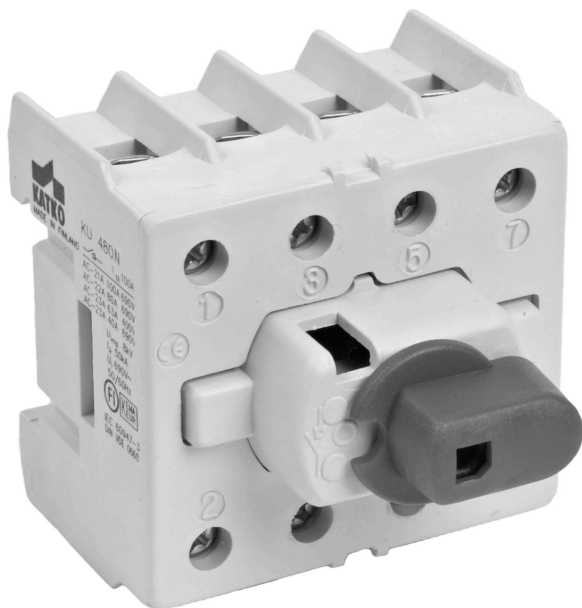


KU 4125N

KU Rotary switches and change-over switches 16-125A



Data subject to change without notice. Always confirm the data is correct from the seller.

- Compact size
- VV = change-over switch
- DIN-rail mounting
- 3-pole and 4-pole KU-switches as standard
- 2-pole upon request
- 6-pole and 8-pole versions consist of two 3-pole or 4-pole KU-switches connected by a parallel kit
- Switch technology by means of silver contacts ensures safe and durable operation
- Compatible with handles LK10 and LK11 (load break switches) and LK12 (change-over switches)
- Shafts L=100/200/300 AD11 and L=100/200/300 AD11/VT (load break switches) and L=100/200/300 AD12/VT (change-over switches)
- Tested according to IEC 60947-3
- Available with **CCC certificate**, mention when ordering
- **Note!** Al-cables cannot be connected directly to switch terminals. For Al-cable connection please use a bi-metal cable connector, **available here.**

Technical Data

Accessories

Handle & Shaft



Product details

SKU	KU 4125N
AC-22 400/415 V (A)	125 A
AC-22 690 V (A)	80 A
AC-23 400/415 V (A/kW)	63 A / 30 kW
AC-23 690 V (A/kW)	40 A / 37 kW
Cable Area to Switch Terminal (only Cu) (mm²) / Bolt size	2.5-35
E-Number	3635432
EAN	6419410216125
Number of Poles	4
Operation	Rotary
Switch type	Load Break Switch
Weight (kg)	0.25